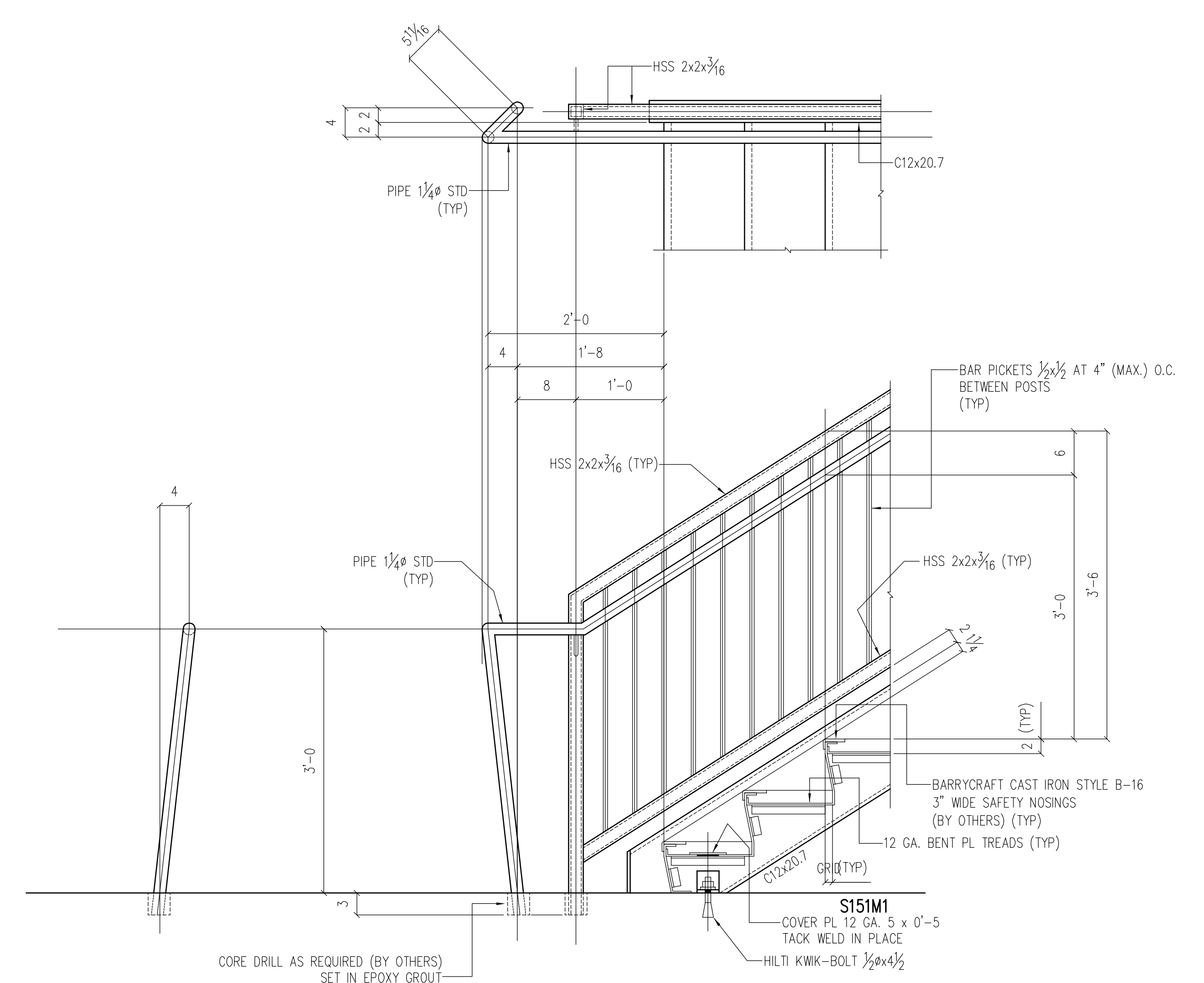
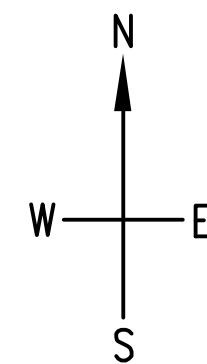


PLAN AT STAIR NO. C02 - THIRD FLOOR



SECTION A/SE111 (AS SHOWN)  
SECTION B/SE111 (OPP. HAND)

**STAIR NOTES**  
 STRINGERS = C12x20.7  
 HEADERS = HSS 7x4x3/8  
 TREADS = 12 GA. PL W/ 2" FILL (TYP)  
 LANDINGS = 12 GA. PL W/ 3" FILL  
 ON 1 1/4x3/4 BAR GRATING  
 GUARDRAILS = HSS 2x2x3/16 WITH  
 BAR PICKETS 1/2x1/2 AT 4" O.C. MAX.  
 HANDRAILS = PIPE 1 1/4 STD.

DESIGN REF: A-700, A-702  
 ERECTION DWG. REF: SE110, SE112, SE113, SE114, SE115, SE116, SE117

PRINT RECORD					
Date	Quan.	For	Date	Quan.	For
DATE		APPROVAL			
		FIELD USE			

STAIR NO. C02

Rev.	Date	Description	By

**IRWIN STEEL**  
 15740 Highway 114 ~ Justin, Texas 76247  
 Phone (817) 636-2508 ~ Fax (817) 636-2506

Job Name: CUSTOM PAN STAIR IN STEEL FRAME  
 Location: CITY, TEXAS  
 Customer: CONTRACTOR  
 Architect: ARCHITECT

DRAWN: THX      JOB NO: 1138      SHEET NO: SE111  
 CHECKED: HAL      CAD NO:      DATE A: